

SAMOA AT A GLANCE

Camel Rock near the village of Lau'i'i

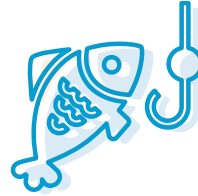


Home to over
200,000
PEOPLE

MAJOR INDUSTRIES



Tourism



Fishing



Agriculture



CAPITAL
Apia

The capital city **Apia** is on **Upolu island** situated to the southeast of Savai'i, known as the 'big island'.



GEOGRAPHY

Samoa is a small **archipelago** in the centre of the **South Pacific**. It is made up of **4 inhabited islands** and a number of smaller islands and outcrops. The 4 inhabited islands are **Upolu, Savai'i, Manono and Apolima**.

For detailed country map please visit: maps.google.com



CULTURE

Samoa has one of the oldest Polynesian cultures.

The fa'a Samoa, or traditional Samoan way, is a strong presence in Samoan life and politics. Ceremonies such as the 'ava (kava) ceremony are held at important occasions and includes speeches and the formal drinking of 'ava.

LANGUAGES

SAMOAN
(Gagana Samoa)
ENGLISH



Gagana Samoa (Samoan) and English are both official languages of Samoa. The main language spoken is Samoan, though English is also widely used even in rural areas.



DRESS

Casual clothing such as shorts, shirts and sandals is generally acceptable throughout Samoa. For more formal meetings or attending church, modest western-style or Polynesian-style clothing is acceptable.



PASTIMES

Rugby, volleyball, lape, kirikiti, fautasi racing

Common sports include rugby, volleyball, lape (Samoan version of softball), kirikiti (Samoan cricket) and fautasi racing, which is a kind of longboat racing.



RELIGION CHRISTIANITY

Christianity is the main religion in Samoa and is an important part of everyday life. Most public services are closed on Sundays. In Australia, workers may want to attend local church services on Sundays or Saturdays. Prayers are very important for many Samoans and these are generally said before meals are eaten.

WORKPLACE CULTURE



The handshake is a common greeting for Samoans and is appropriate for both men and women. It is acceptable to remain seated while shaking hands. Note that meetings may be interrupted by prayers if they run into a time of worship.

Swearing and blasphemy are not common and can be interpreted as offensive or aggressive behaviour.



PHRASES & GREETINGS

It is normal to greet people by saying hello and waving, even if you are in a car passing people on foot.

PHRASE — English	Samoa	PHRASE — English	Samoa
Hello	Talofa	Goodbye	Tofa soifua
How are you?	Ua mai oe?	I'm sorry	Fa'amalie atu
Please	Fa'amolemole	Do you speak English?	E te iloa tautala fa'algilisi?
Thank you	Fa'afetai		

For more common phrases and translations, refer to: <https://omniglot.com/language/phrases/samoan.php>



Tropical Beach, Upolu, Samoa